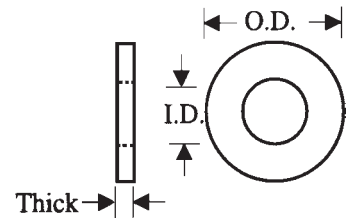


SPECIAL NYLON WASHERS (CONTINUED)



Part Number: C16 + Code

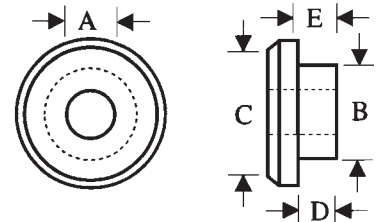
CODE	ID	OD	THICK
690	1.000	1.625	.187
695	1.001	1.245	.031
700	1.010	2.260	.075
705	1.015	1.375	.125
710	1.015	1.500	.080
715	1.026	1.312	.191
720	1.028	1.850	.120
725	1.031	1.218	.040
730	1.075	2.500	.125
735	1.080	2.000	.160
740	1.088	1.312	.062
745	1.125	2.935	.093
750	1.180	1.458	.100
755	1.255	1.695	.065
760	1.270	3.000	.093
765	1.275	2.275	.120
770	1.280	2.010	.135
775	1.325	2.000	.310

CODE	ID	OD	THICK
780	1.375	1.625	.110
785	1.395	1.650	.140
790	1.405	1.635	.093
795	1.420	2.180	.050
800	1.490	2.970	.125
805	1.495	1.619	.245
810	1.500	1.724	.118
815	1.500	1.906	.093
820	1.525	2.000	.060
825	1.525	1.985	.125
830	1.625	2.995	.093
835	1.720	2.205	.050
840	1.750	2.500	.125
845	1.760	2.135	.130
850	1.800	2.060	.055
855	1.930	2.690	.125
860	2.620	3.260	.062
865	2.800	3.016	.072

NYLON SHOULDER WASHERS

Part Number C26 + Code

CODE	SIZE	A	B	C	D	E
001	2	.093	5/32	1/4	.040	.040
002	4	.122	3/16	9/32	.040	.040
003	6	.146	7/32	21/64	.040	.040
004	8	.174	1/4	3/8	.050	.050
005	10	.201	9/32	7/16	.050	.050
006	1/4	.260	3/8	9/16	.060	.060
007	3/8	.385	1/2	3/4	.060	.060



- Use in applications where metal screws must be insulated completely from the mounting surface
- As a through chassis bushing to insulate and protect wires, tubing, etc.