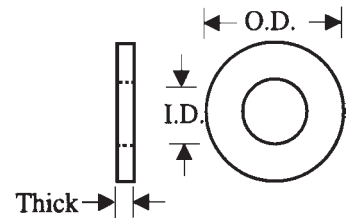


SPECIAL NYLON WASHERS

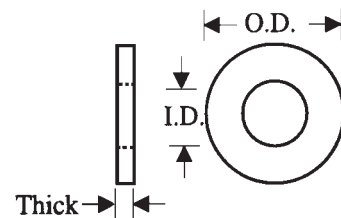


Part Number: C16 + Code

CODE	ID	OD	THICK
001	.437	.625	.093
005	.437	.625	.250
010	.437	.876	.502
015	.437	1.500	.130
020	.440	.650	.125
025	.443	.745	.095
030	.450	1.000	.125
035	.450	1.375	.090
040	.453	.938	.155
045	.461	.709	.110
050	.463	.523	.060
055	.463	.713	.065
060	.470	.750	.200
065	.472	.929	.126
070	.473	.685	.190
075	.475	.525	.070
080	.477	1.184	.079
085	.480	.825	.100
090	.481	.554	.030
095	.481	.671	.031
100	.490	.710	.125
105	.495	.809	.059
110	.500	.625	.132
115	.500	.775	.120
120	.500	.875	.125
125	.500	.880	.065
130	.500	.900	.075
135	.500	1.000	.100
140	.500	1.125	.062
145	.500	1.500	.125
150	.503	.820	.095
155	.503	1.120	.033
160	.505	.625	.092
165	.505	1.000	.125
170	.505	1.500	.130

CODE	ID	OD	THICK
175	.506	.745	.150
180	.506	.940	.064
185	.507	.692	.042
190	.510	.805	.220
195	.510	1.375	.062
200	.510	2.000	.060
205	.512	1.570	.118
210	.514	.743	.093
215	.515	.775	.250
220	.515	.900	.060
225	.515	.750	.250
230	.515	1.468	.050
235	.515	1.500	.437
240	.516	1.250	.062
245	.518	1.000	.080
250	.521	1.490	.120
255	.522	.712	.062
260	.523	1.363	.051
265	.525	1.375	.125
270	.526	.718	.219
275	.526	.718	.281
280	.530	.750	.230
285	.530	1.375	.173
290	.531	.697	.158
295	.531	.740	.187
300	.531	.865	.200
305	.531	.870	.187
310	.531	1.625	.312
315	.540	1.120	.125
320	.544	.817	.140
325	.558	.755	.030
330	.562	1.000	.125
335	.562	1.250	.032
340	.565	.700	.062
345	.568	.687	.062

SPECIAL NYLON WASHERS (CONTINUED)

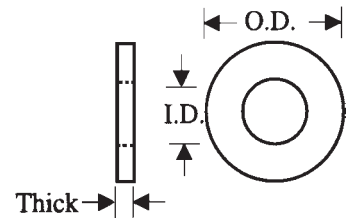


Part Number: C16 + Code

CODE	ID	OD	THICK
350	.570	.715	.100
355	.578	.756	.110
360	.580	.937	.082
365	.583	.937	.062
370	.589	.882	.085
375	.590	.778	.032
380	.605	1.128	.239
385	.621	.805	.125
390	.625	.750	.170
391	.625	.812	.032
395	.625	.937	.093
400	.625	1.718	.050
405	.627	.875	.114
410	.630	.812	.100
415	.630	.812	.220
420	.630	1.130	.060
425	.630	1.562	.062
430	.630	2.000	.125
435	.631	1.000	.128
440	.631	1.004	.065
445	.632	1.000	.185
450	.632	2.930	.150
455	.633	.782	.125
460	.635	.995	.250
465	.635	1.120	.140
470	.640	.781	.031
475	.643	1.225	.100
480	.645	1.310	.120
485	.656	.844	.060
490	.656	1.375	.125
495	.659	1.575	.118
500	.665	1.500	.094
505	.688	.865	.155
510	.695	.812	.093
515	.696	1.500	.120

CODE	ID	OD	THICK
520	.697	1.425	.100
525	.730	.840	.125
530	.730	1.000	.062
535	.740	1.060	.100
540	.740	1.062	.225
545	.750	1.505	.053
550	.755	1.000	.175
555	.755	1.500	.125
559	.750	1.000	.060
560	.760	1.000	.062
565	.760	1.420	.100
570	.765	1.250	.080
575	.765	1.490	.100
580	.771	.993	.124
585	.805	1.250	.060
590	.805	2.000	.062
595	.810	1.490	.062
600	.812	1.057	.125
605	.812	1.250	.080
610	.812	3.132	.125
615	.844	1.031	.040
620	.844	1.000	.125
625	.875	1.117	.195
630	.875	1.250	.125
635	.880	1.280	.062
640	.889	1.125	.060
645	.928	1.750	.275
650	.938	1.310	.040
655	.948	1.800	.057
660	.984	1.203	.050
665	1.000	1.312	.191
670	1.000	1.312	.125
675	1.000	1.437	.069
680	1.000	1.450	.063
685	1.000	1.563	.062

SPECIAL NYLON WASHERS (CONTINUED)



Part Number: C16 + Code

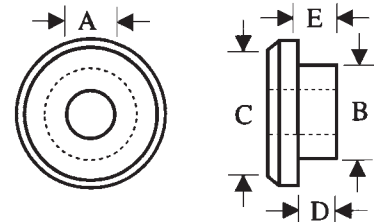
CODE	ID	OD	THICK
690	1.000	1.625	.187
695	1.001	1.245	.031
700	1.010	2.260	.075
705	1.015	1.375	.125
710	1.015	1.500	.080
715	1.026	1.312	.191
720	1.028	1.850	.120
725	1.031	1.218	.040
730	1.075	2.500	.125
735	1.080	2.000	.160
740	1.088	1.312	.062
745	1.125	2.935	.093
750	1.180	1.458	.100
755	1.255	1.695	.065
760	1.270	3.000	.093
765	1.275	2.275	.120
770	1.280	2.010	.135
775	1.325	2.000	.310

CODE	ID	OD	THICK
780	1.375	1.625	.110
785	1.395	1.650	.140
790	1.405	1.635	.093
795	1.420	2.180	.050
800	1.490	2.970	.125
805	1.495	1.619	.245
810	1.500	1.724	.118
815	1.500	1.906	.093
820	1.525	2.000	.060
825	1.525	1.985	.125
830	1.625	2.995	.093
835	1.720	2.205	.050
840	1.750	2.500	.125
845	1.760	2.135	.130
850	1.800	2.060	.055
855	1.930	2.690	.125
860	2.620	3.260	.062
865	2.800	3.016	.072

NYLON SHOULDER WASHERS

Part Number C26 + Code

CODE	SIZE	A	B	C	D	E
001	2	.093	5/32	1/4	.040	.040
002	4	.122	3/16	9/32	.040	.040
003	6	.146	7/32	21/64	.040	.040
004	8	.174	1/4	3/8	.050	.050
005	10	.201	9/32	7/16	.050	.050
006	1/4	.260	3/8	9/16	.060	.060
007	3/8	.385	1/2	3/4	.060	.060



- Use in applications where metal screws must be insulated completely from the mounting surface
- As a through chassis bushing to insulate and protect wires, tubing, etc.