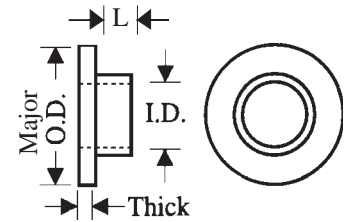


FIBRE (HARD VULCANIZED) SHOULDER WASHERS

Part Number: **C24 + Code**

CODE	SCREW SIZE	ID	MAJOR OD	THICK	MINOR OD	SHOULDER LENGTH
001	2	.090	1/4	.030	.156	.025
002	2	.090	1/4	.050	.156	.030
003	2	.090	1/4	.060	.156	.030
004	4	.120	1/4	.030	.185	.025
006	4	.120	3/8	.030	.156	.030
007	6	.140	5/16	.040	.185	.030
009	6	.140	5/16	.060	.185	.030
010	8	.175	3/8	.040	.245	.030
012	8	.170	3/8	.060	.245	.030
014	10	.195	3/8	.050	.310	.030
017	1/4	.255	1/2	.060	.310	.030
020	3/8	.380	5/8	.050	.437	.030
021	3/8	.380	5/8	.060	.437	.030



FIBRE (HARD VULCANIZED) WASHERS

Part Number: **C51 (GRAY) + Code**
C52 (BLACK) + Code

CODE	NOMINAL ID	NOMINAL OD	THICKNESS
001	.060	5/32	.010
002	.065	3/16	.015
003	.080	3/16	.015
004	.090	3/16	.015
005	.090	3/16	.030
006	.120	1/4	.030
007	.120	9/32	.030
008	.150	1/4	.030
009	.150	5/16	.030
010	.170	3/8	.030

CODE	NOMINAL ID	NOMINAL OD	THICKNESS
011	.195	3/8	.030
012	.195	7/16	.045
013	.220	3/8	.030
014	.260	1/2	.030
015	.265	9/16	.030
016	.265	9/16	.060
017	.325	1/2	.030
018	.390	5/8	.030
019	.480	3/4	.030
020	.515	13/16	.030