

NYLON THIN INSULATION WALL SLEEVES

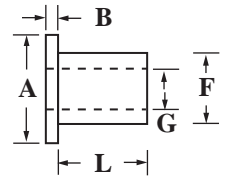


Part Number: C29+ Code

CODE	SCREW SIZE	LENGTH	WALL THICKNESS
001	2	1/8	.012
002	2	1/4	.012
003	2	3/8	.012
004	2	1/2	.012
005	4	1/8	.013
006	4	1/4	.013
007	4	3/8	.013
008	4	1/2	.013
009	4	3/4	.013
010	6	1/4	.015
011	6	3/8	.015
012	6	1/2	.015
013	6	3/4	.015
014	6	1	.015
015	8	1/4	.015
016	8	3/8	.015
017	8	1/2	.015
018	8	3/4	.015
019	8	1	.015
020	10	1/4	.017
021	10	3/8	.017
022	10	1/2	.017
023	10	3/4	.017
024	10	1	.017
025	1/4	1/4	.019
026	1/4	3/8	.019
027	1/4	1/2	.019
028	1/4	3/4	.019
029	1/4	1	.019
034	4	5/16	.013
035	4	7/16	.013
037	6	.090	.015
039	6	.120	.015
040	6	.125	.015
041	6	3/16	.015
042	6	.200	.015
043	6	7/32	.015
046	10	.425	.017

- Ideal for insulating exposed sections of various components and fasteners
- Useful for limited-space, light duty spacing

NYLON SCREW INSULATORS



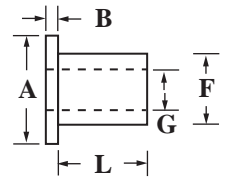
Part Number: C27 + Code

CODE	SCREW SIZE	LENGTH	A	B	F	G
002	2	5/64	.205	1/32	.125	.093
003	2	7/64	.205	1/32	.125	.093
004	2	1/8	.181	3/64	.120	.090
006	2	3/16	.181	3/64	.120	.090
009	2	1/4	.181	3/64	.120	.090
012	2	3/8	.181	3/64	.120	.090
014	4	1/32	.235	3/64	.145	.115
015	4	1/16	.235	3/64	.145	.115
016	4	3/32	.235	3/64	.145	.115
017	4	1/8	.235	3/64	.145	.115
019	4	5/32	.235	3/64	.145	.115
021	4	3/16	.235	3/64	.145	.115
022	4	1/4	.235	3/64	.145	.115
025	4	3/8	.235	3/64	.145	.115
027	4	1/2	.235	3/64	.145	.115
028	6	3/32	.290	3/64	.170	.140
029	6	1/8	.290	3/64	.170	.140
031	6	3/16	.290	3/64	.170	.140
033	6	1/4	.290	3/64	.170	.140
036	6	3/8	.290	3/64	.170	.140
038	6	1/2	.290	3/64	.170	.140
039	8	1/8	.344	1/16	.205	.173
040	8	9/64	.344	1/16	.205	.173
042	8	1/4	.344	1/16	.208	.173
045	8	3/8	.344	1/16	.208	.173

CODE	SCREW SIZE	LENGTH	A	B	F	G
047	8	13/32	.500	1/16	.250	.173
049	8	1/2	.344	1/16	.208	.173
051	8	5/8	.344	1/16	.208	.173
052	8	3/4	.344	1/16	.208	.173
053	10	3/32	.437	1/16	.267	.200
054	10	3/16	.399	1/16	.250	.200
055	10	1/4	.399	1/16	.260	.200
058	10	3/8	.399	1/16	.260	.200
061	10	1/2	.399	1/16	.260	.200
063	10	5/8	.399	1/16	.260	.200
064	10	3/4	.399	1/16	.260	.200
065	1/4	1/8	.467	3/64	.312	.255
066	1/4	3/16	.513	1/16	.312	.260
067	1/4	1/4	.513	1/16	.312	.260
068	1/4	5/16	.500	1/16	.312	.260
069	1/4	3/8	.513	1/16	.312	.260
071	1/4	1/2	.513	1/16	.312	.260
072	1/4	5/8	.513	1/16	.312	.260
073	1/4	3/4	.513	1/16	.312	.260
074	5/16	1/8	.620	1/16	.360	.320
075	5/16	1/4	.620	1/16	.360	.320
076	5/16	3/8	.620	1/16	.360	.320
077	5/16	1/2	.620	1/16	.360	.320
078	5/16	5/8	.620	1/16	.360	.320

- High strength for high tensile and torque applications
- Wide flange design for complete isolation of screw from mounting surface
- Useful as light load bearings

NYLON SCREW INSULATORS (CONTINUED)



Part Number: C27 + Code

CODE	LENGTH	A	B	F	G
100	.040	.250	.047	.140	.110
110	.031	.218	.047	.135	.115
120	.045	.220	.047	.145	.120
130	.120	.250	.055	.150	.120
140	.047	.230	.016	.142	.122
150	.250	.283	.045	.199	.123
160	.075	.312	.063	.187	.123
169	.047	.290	.047	.170	.140
170	.062	.349	.047	.248	.140
180	.190	.875	.140	.343	.141
190	.090	.355	.040	.250	.150
200	.316	.620	.060	.502	.150
210	.680	.500	.060	.369	.157
220	.062	.393	.047	.194	.159
230	.118	.472	.083	.216	.160
240	.140	.500	.078	.312	.172
250	.050	.375	.050	.250	.174
255	.125	3/8	.035	.242	.185
260	.040	.437	.060	.278	.193
270	.031	.437	.062	.240	.194
280	.120	.380	.197	.264	.196
290	.125	.380	.065	.254	.196
300	.141	.440	.040	.303	.196
310	.187	.500	.125	.277	.196
320	.158	.581	.120	.300	.196
330	.187	.408	.062	.240	.197
340	.295	.425	.067	.312	.210
350	.127	.496	.085	.305	.212
360	.194	.408	.062	.238	.215
370	.125	.600	.125	.370	.250
380	.062	.750	.125	.500	.250
390	.170	.938	.125	.440	.253
395	.188	.630	.062	.375	.254
399	.188	.500	.031	.365	.255

CODE	LENGTH	A	B	F	G
400	.141	.510	.062	.310	.255
410	.422	.550	.062	.372	.255
420	.109	.437	.060	.355	.256
430	.101	.750	.150	.341	.256
440	.100	.570	.135	.422	.257
445	.141	.513	.062	.312	.260
449	.210	.625	.058	.379	.263
450	.075	1.000	.060	.425	.265
455	.156	.720	.062	.485	.270
460	.250	.750	.125	.500	.280
470	.094	.750	.093	.500	.281
480	.047	.428	.125	.350	.308
485	.150	.620	.060	.502	.316
490	.139	.625	.066	.405	.320
500	.118	.748	.059	.482	.358
507	.125	.750	.062	.500	.375
508	.242	.750	.070	.496	.375
509	.075	.640	.063	.500	.375
510	.750	.745	.062	.500	.375
520	.220	.563	.030	.440	.380
530	.672	.656	.109	.531	.382
540	.360	.750	.125	.505	.383
550	.400	1.000	.120	.520	.390
560	.700	1.000	.120	.520	.390
570	.185	1.590	.190	.625	.400
580	.500	.687	.062	.562	.437
590	.174	.750	.066	.625	.470
600	.174	.750	.066	.625	.503
610	.275	.910	.050	.780	.515
620	.395	.875	.110	.625	.520
630	.760	1.250	.120	.660	.520
640	.220	.880	.030	.680	.550
650	.313	1.125	.062	.875	.750
660	.219	1.120	.132	.935	.875