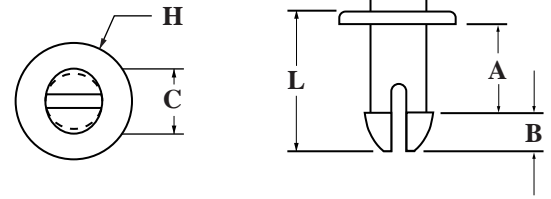


NYLON PUSH-IN-FASTENERS (CONTINUED)



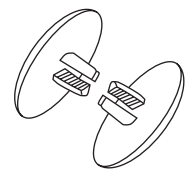
Part Number: B13 + Code

CODE	DESC	H	A	B	C	D	L
067	PIF 81	11/32	.125	.137	.202	.165	.31
068	PIF 82	11/16	.250	.255	.360	.290	.585
069	PIF 83	1/2	.064	.138	.280	.243	.262
070	PIF 84	1/2	.099	.168	.280	.245	.324
071	PIF 85	1/2	.127	.177	.281	.241	.361
072	PIF 86	1/2	.156	.170	.281	.242	.380
073	PIF 87	1/2	.189	.151	.278	.241	.395
074	PIF 88	1/2	.219	.178	.277	.239	.445
075	PIF 89	1/2	.250	.175	.283	.241	.487
076	PIF 90	1/2	.281	.176	.280	.240	.513
077	PIF 91	1/2	.314	.152	.281	.241	.520
078	PIF 92	1/2	.345	.177	.281	.240	.578
079	PIF 93	1/2	.375	.175	.281	.242	.609
080	PIF 94	1/2	.405	.175	.282	.243	.638

CODE	DESC	H	A	B	C	D	L
081	PIF 95	19/32	.130	.125	.205	.145	.305
082	PIF 96	1/2	.466	.178	.280	.240	.701
083	PIF 97	1/2	.498	.176	.280	.240	.734
084	PIF 98	1/2	.438	.176	.281	.240	.672
085	PIF 99	1/2	1.020	.380	.475	.350	1.460
086	PIF 100	3/8	1.543	.205	.295	.250	1.875
087	PIF 101	.680	.154	.255	.347	.285	.473
088	PIF 102	.300	.050	.137	.202	.165	.337
089	PIF 105	5/8	1.065	.360	.360	.270	1.50
090	PIF 0150	.345	.548	.159	.224	.178	.780
091	PIF 0253	.766	.640	.183	.220	.180	.875
092	PIF 0466	3/8	.875	.250	.312	.250	1.187
093	PIF 1165	13/32	.890	.060	.340	.260	1.015
094	PIF 1186	.275	.400	.133	.160	.135	.617

NYLON RIVETS

Part Number: G17+ Code



CODE	ASSEMBLED PANEL THICKNESS	HEAD DIAMETER & THICKNESS
001	.235-.298	.750/.094
002	.345-.500	.750/.094
003	.500-.812	.750/.093
004	.780-1.375	.750/.093
005	.235-.297	.406/.062
006	.346-.500	.406/.063
007	.500-.813	.406/.063
008	.780-1.375	.406/.062

Two mating parts to securely connect flat panels. (Assembly to fit .281 diameter hole.)