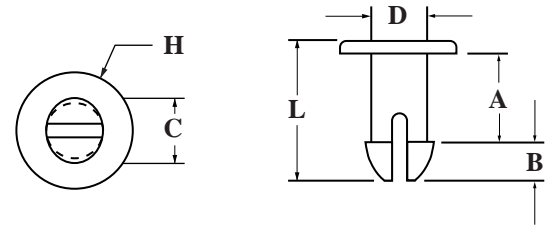


NYLON PUSH-IN-FASTENERS

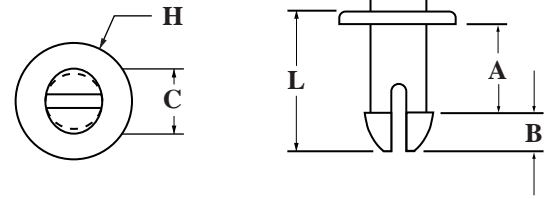


Part Number: B13 + Code

CODE	DESC	H	A	B	C	D	L
001	PIF 13	3/16	.533	.087	.130	.095	.675
002	PIF 14	.248	.813	.140	.144	.110	1.017
003	PIF 15	21/64	.030	.130	.162	.152	.200
004	PIF 17	11/32	.130	.110	.200	.160	.270
005	PIF 18	13/64	.230	.098	.156	.128	.370
006	PIF 19	1/4	.445	.085	.145	.095	.590
007	PIF 20	15/64	.080	.080	.180	.124	.200
008	PIF 21	.186	.200	.065	.104	.080	.297
009	PIF 22	1/2	.064	.185	.280	.243	.370
010	PIF 23	3/16	.075	.060	.150	.120	.190
011	PIF 24	19/32	.365	.187	.295	.245	.685
012	PIF 25	15/64	1.010	.082	.164	.124	1.13
013	PIF 26	15/64	.080	.070	.180	.124	.205
014	PIF 27	3/8	1.062	.177	.202	.165	1.303
015	PIF 28	11/32	.875	.174	.224	.175	1.115
016	PIF 29	13/64	.210	.091	.179	.130	.342
017	PIF 31	25/64	.503	.210	.295	.230	1.083
018	PIF 32	13/64	.235	.066	.145	.115	.341
019	PIF 33	3/8	.505	.130	.200	.130	.705
020	PIF 34	3/4	.636	.180	.220	.180	.875
021	PIF 35	5/16	.125	.070	.110	.089	.235
022	PIF 36	3/16	.066	.075	.100	.090	.179
023	PIF 37	3/8	.636	.180	.220	.180	.875
024	PIF 38	9/32	.063	.078	.100	.093	.165
025	PIF 39	1/4	.115	.085	.145	.093	.240
026	PIF 40	9/32	.093	.078	.105	.093	.200
027	PIF 41	5/16	.121	.085	.145	.089	.246
028	PIF 42	13/64	.190	.090	.180	.130	.320
029	PIF 43	13/64	.156	.135	.140	.115	.320
030	PIF 44	13/64	.135	.135	.140	.115	.295
031	PIF 45	13/64	.235	.070	.137	.115	.350
032	PIF 46	13/64	.250	.106	.145	.115	.395
033	PIF 47	13/64	.121	.105	.145	.115	.260

CODE	DESC	H	A	B	C	D	L
034	PIF 48	25/64	.315	.113	.208	.157	.488
035	PIF 49	11/32	.450	.160	.200	.160	.680
036	PIF 50	11/32	.125	.137	.202	.165	.305
037	PIF 51	11/32	.065	.137	.202	.165	.325
038	PIF 52	11/32	.556	.153	.225	.180	.780
039	PIF 53	11/32	.242	.174	.224	.175	.490
040	PIF 54	11/32	.197	.185	.295	.255	.415
041	PIF 55	11/32	.555	.145	.225	.180	.770
042	PIF 56	9/64	.315	.075	.135	.095	.450
043	PIF 57	7/16	.120	.255	.380	.305	.445
044	PIF 58	15/32	.121	.153	.238	.200	.324
045	PIF 59	3/16	.145	.065	.105	.090	.255
046	PIF 60	15/32	.156	.125	.228	.200	.333
047	PIF 61	11/32	.370	.105	.236	.203	.540
048	PIF 62	25/64	1.730	.210	.295	.230	2.010
049	PIF 63	29/64	.276	.142	.295	.240	.460
050	PIF 64	29/64	.300	.170	.295	.240	.535
051	PIF 65	19/32	.480	.187	.293	.245	.720
052	PIF 66	29/64	.330	.165	.295	.240	.555
053	PIF 67	1/2	.171	.187	.295	.260	.405
054	PIF 68	11/16	.140	.255	.360	.290	.468
055	PIF 69	5/16	.095	.075	.145	.095	.218
056	PIF 70	19/32	.171	.187	.295	.260	.418
057	PIF 71	19/32	.250	.187	.300	.245	.497
058	PIF 72	19/32	.365	.187	.290	.245	.622
059	PIF 73	11/32	.171	.187	.295	.260	.380
060	PIF 74	19/32	.405	.160	.315	.275	.620
061	PIF 75	1/4	.550	.135	.145	.112	.745
062	PIF 76	15/32	.129	.148	.238	.197	.399
063	PIF 77	15/64	.320	.084	.145	.118	.437
064	PIF 78	13/32	.250	.100	.278	.217	.395
065	PIF 79	9/16	.950	.174	.228	.172	1.20
066	PIF 80	3/8	1.258	.17	.202	.165	1.365

NYLON PUSH-IN-FASTENERS (CONTINUED)



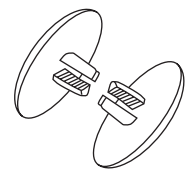
Part Number: B13 + Code

CODE	DESC	H	A	B	C	D	L
067	PIF 81	11/32	.125	.137	.202	.165	.31
068	PIF 82	11/16	.250	.255	.360	.290	.585
069	PIF 83	1/2	.064	.138	.280	.243	.262
070	PIF 84	1/2	.099	.168	.280	.245	.324
071	PIF 85	1/2	.127	.177	.281	.241	.361
072	PIF 86	1/2	.156	.170	.281	.242	.380
073	PIF 87	1/2	.189	.151	.278	.241	.395
074	PIF 88	1/2	.219	.178	.277	.239	.445
075	PIF 89	1/2	.250	.175	.283	.241	.487
076	PIF 90	1/2	.281	.176	.280	.240	.513
077	PIF 91	1/2	.314	.152	.281	.241	.520
078	PIF 92	1/2	.345	.177	.281	.240	.578
079	PIF 93	1/2	.375	.175	.281	.242	.609
080	PIF 94	1/2	.405	.175	.282	.243	.638

CODE	DESC	H	A	B	C	D	L
081	PIF 95	19/32	.130	.125	.205	.145	.305
082	PIF 96	1/2	.466	.178	.280	.240	.701
083	PIF 97	1/2	.498	.176	.280	.240	.734
084	PIF 98	1/2	.438	.176	.281	.240	.672
085	PIF 99	1/2	1.020	.380	.475	.350	1.460
086	PIF 100	3/8	1.543	.205	.295	.250	1.875
087	PIF 101	.680	.154	.255	.347	.285	.473
088	PIF 102	.300	.050	.137	.202	.165	.337
089	PIF 105	5/8	1.065	.360	.360	.270	1.50
090	PIF 0150	.345	.548	.159	.224	.178	.780
091	PIF 0253	.766	.640	.183	.220	.180	.875
092	PIF 0466	3/8	.875	.250	.312	.250	1.187
093	PIF 1165	13/32	.890	.060	.340	.260	1.015
094	PIF 1186	.275	.400	.133	.160	.135	.617

NYLON RIVETS

Part Number: G17+ Code



CODE	ASSEMBLED PANEL THICKNESS	HEAD DIAMETER & THICKNESS
001	.235-.298	.750/.094
002	.345-.500	.750/.094
003	.500-.812	.750/.093
004	.780-1.375	.750/.093
005	.235-.297	.406/.062
006	.346-.500	.406/.063
007	.500-.813	.406/.063
008	.780-1.375	.406/.062

Two mating parts to securely connect flat panels. (Assembly to fit .281 diameter hole.)