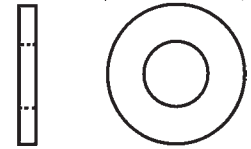


TEFLON® (TFE) WASHERS



Part Number: C13 + Code

CODE	ID	OD	THICK
001	.090	1/4	.010
002	.090	1/4	.015
003	.090	1/4	.020
004	.120	9/32	.015
005	.120	9/32	.020
006	.120	9/32	.025
007	.120	9/32	.030
008	.150	5/16	.020
009	.150	5/16	.025
010	.150	5/16	.030
011	.150	5/16	.045
012	.170	3/8	.020
013	.170	3/8	.025
014	.170	3/8	.030
015	.170	3/8	.045
016	.195	7/16	.025
017	.195	7/16	.030
018	.195	7/16	.045
019	.195	7/16	.060
020	.265	9/16	.025
021	.265	9/16	.030
022	.265	9/16	.045
023	.265	9/16	.060
024	.340	11/16	.030
025	.340	11/16	.045
026	.340	11/16	.060
027	.405	13/16	.030
028	.405	13/16	.045
029	.405	13/16	.060

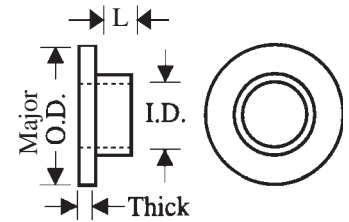
CODE	ID	OD	THICK
030	.531	1	.030
031	.531	1	.045
032	.531	1	.060
034	.510	.812	.010
036	.328	.453	.062
037	.656	.750	.063
038	.090	.187	.015
039	.090	.187	.020
040	.090	.250	.030
041	.115	.281	.015
042	.115	.281	.045
043	.120	.312	.015
044	.120	.250	.045
045	.120	.370	.095
046	.123	.250	.030
047	.125	.201	.030
048	.125	.250	.015
049	.125	.250	.020
050	.125	.312	.047
051	.125	.500	.020
052	.129	.375	.025
053	.150	.500	.030
054	.187	.500	.030
055	.190	.250	.031
056	.190	.375	.032
057	.190	.500	.020
058	.195	.296	.062
059	.195	.437	.090
060	.196	.348	.062

CODE	ID	OD	THICK
061	.200	.303	.025
062	.200	.500	.060
063	.213	.500	.020
064	.218	.500	.030
065	.220	.590	.045
066	.250	.312	.030
067	.250	.500	.060
068	.250	.750	.030
069	.253	.400	.050
070	.265	.328	.090
071	.265	.500	.020
072	.270	.320	.030
073	.312	.750	.010
074	.315	.625	.062
075	.322	.710	.015
076	.328	.625	.020
077	.330	.750	.095
078	.360	1.025	.040
079	.375	.500	.010
080	.375	.500	.062
081	.375	.875	.032
082	.375	.720	.032
083	.400	.990	.075
084	.500	.750	.045
085	.720	1.375	.032
086	.749	1.523	.056
087	.755	1.250	.062
088	.810	1.500	.062
089	.937	1.000	.032

FIBRE (HARD VULCANIZED) SHOULDER WASHERS

Part Number: C24 + Code

CODE	SCREW SIZE	ID	MAJOR OD	THICK	MINOR OD	SHOULDER LENGTH
001	2	.090	1/4	.030	.156	.025
002	2	.090	1/4	.050	.156	.030
003	2	.090	1/4	.060	.156	.030
004	4	.120	1/4	.030	.185	.025
006	4	.120	3/8	.030	.156	.030
007	6	.140	5/16	.040	.185	.030
009	6	.140	5/16	.060	.185	.030
010	8	.175	3/8	.040	.245	.030
012	8	.170	3/8	.060	.245	.030
014	10	.195	3/8	.050	.310	.030
017	1/4	.255	1/2	.060	.310	.030
020	3/8	.380	5/8	.050	.437	.030
021	3/8	.380	5/8	.060	.437	.030



FIBRE (HARD VULCANIZED) WASHERS

Part Number: C51 (GRAY) + Code
C52 (BLACK) + Code

CODE	NOMINAL ID	NOMINAL OD	THICKNESS
001	.060	5/32	.010
002	.065	3/16	.015
003	.080	3/16	.015
004	.090	3/16	.015
005	.090	3/16	.030
006	.120	1/4	.030
007	.120	9/32	.030
008	.150	1/4	.030
009	.150	5/16	.030
010	.170	3/8	.030

CODE	NOMINAL ID	NOMINAL OD	THICKNESS
011	.195	3/8	.030
012	.195	7/16	.045
013	.220	3/8	.030
014	.260	1/2	.030
015	.265	9/16	.030
016	.265	9/16	.060
017	.325	1/2	.030
018	.390	5/8	.030
019	.480	3/4	.030
020	.515	13/16	.030

NYLON THIN INSULATION WALL SLEEVES

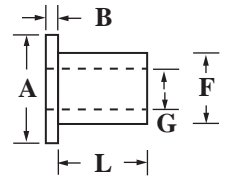


Part Number: C29+ Code

CODE	SCREW SIZE	LENGTH	WALL THICKNESS
001	2	1/8	.012
002	2	1/4	.012
003	2	3/8	.012
004	2	1/2	.012
005	4	1/8	.013
006	4	1/4	.013
007	4	3/8	.013
008	4	1/2	.013
009	4	3/4	.013
010	6	1/4	.015
011	6	3/8	.015
012	6	1/2	.015
013	6	3/4	.015
014	6	1	.015
015	8	1/4	.015
016	8	3/8	.015
017	8	1/2	.015
018	8	3/4	.015
019	8	1	.015
020	10	1/4	.017
021	10	3/8	.017
022	10	1/2	.017
023	10	3/4	.017
024	10	1	.017
025	1/4	1/4	.019
026	1/4	3/8	.019
027	1/4	1/2	.019
028	1/4	3/4	.019
029	1/4	1	.019
034	4	5/16	.013
035	4	7/16	.013
037	6	.090	.015
039	6	.120	.015
040	6	.125	.015
041	6	3/16	.015
042	6	.200	.015
043	6	7/32	.015
046	10	.425	.017

- Ideal for insulating exposed sections of various components and fasteners
- Useful for limited-space, light duty spacing

NYLON SCREW INSULATORS



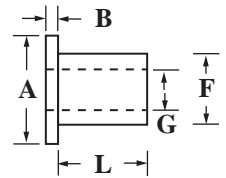
Part Number: C27 + Code

CODE	SCREW SIZE	LENGTH	A	B	F	G
002	2	5/64	.205	1/32	.125	.093
003	2	7/64	.205	1/32	.125	.093
004	2	1/8	.181	3/64	.120	.090
006	2	3/16	.181	3/64	.120	.090
009	2	1/4	.181	3/64	.120	.090
012	2	3/8	.181	3/64	.120	.090
014	4	1/32	.235	3/64	.145	.115
015	4	1/16	.235	3/64	.145	.115
016	4	3/32	.235	3/64	.145	.115
017	4	1/8	.235	3/64	.145	.115
019	4	5/32	.235	3/64	.145	.115
021	4	3/16	.235	3/64	.145	.115
022	4	1/4	.235	3/64	.145	.115
025	4	3/8	.235	3/64	.145	.115
027	4	1/2	.235	3/64	.145	.115
028	6	3/32	.290	3/64	.170	.140
029	6	1/8	.290	3/64	.170	.140
031	6	3/16	.290	3/64	.170	.140
033	6	1/4	.290	3/64	.170	.140
036	6	3/8	.290	3/64	.170	.140
038	6	1/2	.290	3/64	.170	.140
039	8	1/8	.344	1/16	.205	.173
040	8	9/64	.344	1/16	.205	.173
042	8	1/4	.344	1/16	.208	.173
045	8	3/8	.344	1/16	.208	.173

CODE	SCREW SIZE	LENGTH	A	B	F	G
047	8	13/32	.500	1/16	.250	.173
049	8	1/2	.344	1/16	.208	.173
051	8	5/8	.344	1/16	.208	.173
052	8	3/4	.344	1/16	.208	.173
053	10	3/32	.437	1/16	.267	.200
054	10	3/16	.399	1/16	.250	.200
055	10	1/4	.399	1/16	.260	.200
058	10	3/8	.399	1/16	.260	.200
061	10	1/2	.399	1/16	.260	.200
063	10	5/8	.399	1/16	.260	.200
064	10	3/4	.399	1/16	.260	.200
065	1/4	1/8	.467	3/64	.312	.255
066	1/4	3/16	.513	1/16	.312	.260
067	1/4	1/4	.513	1/16	.312	.260
068	1/4	5/16	.500	1/16	.312	.260
069	1/4	3/8	.513	1/16	.312	.260
071	1/4	1/2	.513	1/16	.312	.260
072	1/4	5/8	.513	1/16	.312	.260
073	1/4	3/4	.513	1/16	.312	.260
074	5/16	1/8	.620	1/16	.360	.320
075	5/16	1/4	.620	1/16	.360	.320
076	5/16	3/8	.620	1/16	.360	.320
077	5/16	1/2	.620	1/16	.360	.320
078	5/16	5/8	.620	1/16	.360	.320

- High strength for high tensile and torque applications
- Wide flange design for complete isolation of screw from mounting surface
- Useful as light load bearings

NYLON SCREW INSULATORS (CONTINUED)



Part Number: C27 + Code

CODE	LENGTH	A	B	F	G
100	.040	.250	.047	.140	.110
110	.031	.218	.047	.135	.115
120	.045	.220	.047	.145	.120
130	.120	.250	.055	.150	.120
140	.047	.230	.016	.142	.122
150	.250	.283	.045	.199	.123
160	.075	.312	.063	.187	.123
169	.047	.290	.047	.170	.140
170	.062	.349	.047	.248	.140
180	.190	.875	.140	.343	.141
190	.090	.355	.040	.250	.150
200	.316	.620	.060	.502	.150
210	.680	.500	.060	.369	.157
220	.062	.393	.047	.194	.159
230	.118	.472	.083	.216	.160
240	.140	.500	.078	.312	.172
250	.050	.375	.050	.250	.174
255	.125	3/8	.035	.242	.185
260	.040	.437	.060	.278	.193
270	.031	.437	.062	.240	.194
280	.120	.380	.197	.264	.196
290	.125	.380	.065	.254	.196
300	.141	.440	.040	.303	.196
310	.187	.500	.125	.277	.196
320	.158	.581	.120	.300	.196
330	.187	.408	.062	.240	.197
340	.295	.425	.067	.312	.210
350	.127	.496	.085	.305	.212
360	.194	.408	.062	.238	.215
370	.125	.600	.125	.370	.250
380	.062	.750	.125	.500	.250
390	.170	.938	.125	.440	.253
395	.188	.630	.062	.375	.254
399	.188	.500	.031	.365	.255

CODE	LENGTH	A	B	F	G
400	.141	.510	.062	.310	.255
410	.422	.550	.062	.372	.255
420	.109	.437	.060	.355	.256
430	.101	.750	.150	.341	.256
440	.100	.570	.135	.422	.257
445	.141	.513	.062	.312	.260
449	.210	.625	.058	.379	.263
450	.075	1.000	.060	.425	.265
455	.156	.720	.062	.485	.270
460	.250	.750	.125	.500	.280
470	.094	.750	.093	.500	.281
480	.047	.428	.125	.350	.308
485	.150	.620	.060	.502	.316
490	.139	.625	.066	.405	.320
500	.118	.748	.059	.482	.358
507	.125	.750	.062	.500	.375
508	.242	.750	.070	.496	.375
509	.075	.640	.063	.500	.375
510	.750	.745	.062	.500	.375
520	.220	.563	.030	.440	.380
530	.672	.656	.109	.531	.382
540	.360	.750	.125	.505	.383
550	.400	1.000	.120	.520	.390
560	.700	1.000	.120	.520	.390
570	.185	1.590	.190	.625	.400
580	.500	.687	.062	.562	.437
590	.174	.750	.066	.625	.470
600	.174	.750	.066	.625	.503
610	.275	.910	.050	.780	.515
620	.395	.875	.110	.625	.520
630	.760	1.250	.120	.660	.520
640	.220	.880	.030	.680	.550
650	.313	1.125	.062	.875	.750
660	.219	1.120	.132	.935	.875