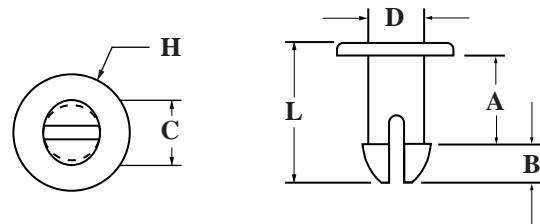


## NYLON PUSH-IN-FASTENERS

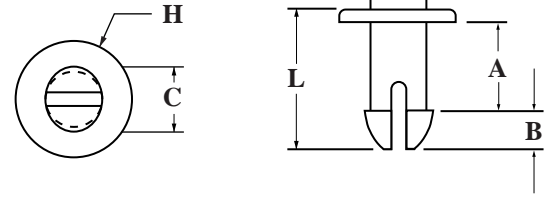


### Part Number: B13 + Code

CODE	DESC	H	A	B	C	D	L
001	PIF 13	3/16	.533	.087	.130	.095	.675
002	PIF 14	.248	.813	.140	.144	.110	1.017
003	PIF 15	21/64	.030	.130	.162	.152	.200
004	PIF 17	11/32	.130	.110	.200	.160	.270
005	PIF 18	13/64	.230	.098	.156	.128	.370
006	PIF 19	1/4	.445	.085	.145	.095	.590
007	PIF 20	15/64	.080	.080	.180	.124	.200
008	PIF 21	.186	.200	.065	.104	.080	.297
009	PIF 22	1/2	.064	.185	.280	.243	.370
010	PIF 23	3/16	.075	.060	.150	.120	.190
011	PIF 24	19/32	.365	.187	.295	.245	.685
012	PIF 25	15/64	1.010	.082	.164	.124	1.13
013	PIF 26	15/64	.080	.070	.180	.124	.205
014	PIF 27	3/8	1.062	.177	.202	.165	1.303
015	PIF 28	11/32	.875	.174	.224	.175	1.115
016	PIF 29	13/64	.210	.091	.179	.130	.342
017	PIF 31	25/64	.503	.210	.295	.230	1.083
018	PIF 32	13/64	.235	.066	.145	.115	.341
019	PIF 33	3/8	.505	.130	.200	.130	.705
020	PIF 34	3/4	.636	.180	.220	.180	.875
021	PIF 35	5/16	.125	.070	.110	.089	.235
022	PIF 36	3/16	.066	.075	.100	.090	.179
023	PIF 37	3/8	.636	.180	.220	.180	.875
024	PIF 38	9/32	.063	.078	.100	.093	.165
025	PIF 39	1/4	.115	.085	.145	.093	.240
026	PIF 40	9/32	.093	.078	.105	.093	.200
027	PIF 41	5/16	.121	.085	.145	.089	.246
028	PIF 42	13/64	.190	.090	.180	.130	.320
029	PIF 43	13/64	.156	.135	.140	.115	.320
030	PIF 44	13/64	.135	.135	.140	.115	.295
031	PIF 45	13/64	.235	.070	.137	.115	.350
032	PIF 46	13/64	.250	.106	.145	.115	.395
033	PIF 47	13/64	.121	.105	.145	.115	.260

CODE	DESC	H	A	B	C	D	L
034	PIF 48	25/64	.315	.113	.208	.157	.488
035	PIF 49	11/32	.450	.160	.200	.160	.680
036	PIF 50	11/32	.125	.137	.202	.165	.305
037	PIF 51	11/32	.065	.137	.202	.165	.325
038	PIF 52	11/32	.556	.153	.225	.180	.780
039	PIF 53	11/32	.242	.174	.224	.175	.490
040	PIF 54	11/32	.197	.185	.295	.255	.415
041	PIF 55	11/32	.555	.145	.225	.180	.770
042	PIF 56	9/64	.315	.075	.135	.095	.450
043	PIF 57	7/16	.120	.255	.380	.305	.445
044	PIF 58	15/32	.121	.153	.238	.200	.324
045	PIF 59	3/16	.145	.065	.105	.090	.255
046	PIF 60	15/32	.156	.125	.228	.200	.333
047	PIF 61	11/32	.370	.105	.236	.203	.540
048	PIF 62	25/64	1.730	.210	.295	.230	2.010
049	PIF 63	29/64	.276	.142	.295	.240	.460
050	PIF 64	29/64	.300	.170	.295	.240	.535
051	PIF 65	19/32	.480	.187	.293	.245	.720
052	PIF 66	29/64	.330	.165	.295	.240	.555
053	PIF 67	1/2	.171	.187	.295	.260	.405
054	PIF 68	11/16	.140	.255	.360	.290	.468
055	PIF 69	5/16	.095	.075	.145	.095	.218
056	PIF 70	19/32	.171	.187	.295	.260	.418
057	PIF 71	19/32	.250	.187	.300	.245	.497
058	PIF 72	19/32	.365	.187	.290	.245	.622
059	PIF 73	11/32	.171	.187	.295	.260	.380
060	PIF 74	19/32	.405	.160	.315	.275	.620
061	PIF 75	1/4	.550	.135	.145	.112	.745
062	PIF 76	15/32	.129	.148	.238	.197	.399
063	PIF 77	15/64	.320	.084	.145	.118	.437
064	PIF 78	13/32	.250	.100	.278	.217	.395
065	PIF 79	9/16	.950	.174	.228	.172	1.20
066	PIF 80	3/8	1.258	.17	.202	.165	1.365

**NYLON PUSH-IN-FASTENERS (CONTINUED)**



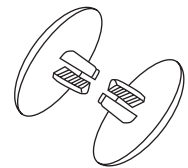
**Part Number: B13 + Code**

CODE	DESC	H	A	B	C	D	L
067	PIF 81	11/32	.125	.137	.202	.165	.31
068	PIF 82	11/16	.250	.255	.360	.290	.585
069	PIF 83	1/2	.064	.138	.280	.243	.262
070	PIF 84	1/2	.099	.168	.280	.245	.324
071	PIF 85	1/2	.127	.177	.281	.241	.361
072	PIF 86	1/2	.156	.170	.281	.242	.380
073	PIF 87	1/2	.189	.151	.278	.241	.395
074	PIF 88	1/2	.219	.178	.277	.239	.445
075	PIF 89	1/2	.250	.175	.283	.241	.487
076	PIF 90	1/2	.281	.176	.280	.240	.513
077	PIF 91	1/2	.314	.152	.281	.241	.520
078	PIF 92	1/2	.345	.177	.281	.240	.578
079	PIF 93	1/2	.375	.175	.281	.242	.609
080	PIF 94	1/2	.405	.175	.282	.243	.638

CODE	DESC	H	A	B	C	D	L
081	PIF 95	19/32	.130	.125	.205	.145	.305
082	PIF 96	1/2	.466	.178	.280	.240	.701
083	PIF 97	1/2	.498	.176	.280	.240	.734
084	PIF 98	1/2	.438	.176	.281	.240	.672
085	PIF 99	1/2	1.020	.380	.475	.350	1.460
086	PIF 100	3/8	1.543	.205	.295	.250	1.875
087	PIF 101	.680	.154	.255	.347	.285	.473
088	PIF 102	.300	.050	.137	.202	.165	.337
089	PIF 105	5/8	1.065	.360	.360	.270	1.50
090	PIF 0150	.345	.548	.159	.224	.178	.780
091	PIF 0253	.766	.640	.183	.220	.180	.875
092	PIF 0466	3/8	.875	.250	.312	.250	1.187
093	PIF 1165	13/32	.890	.060	.340	.260	1.015
094	PIF 1186	.275	.400	.133	.160	.135	.617

**NYLON RIVETS**

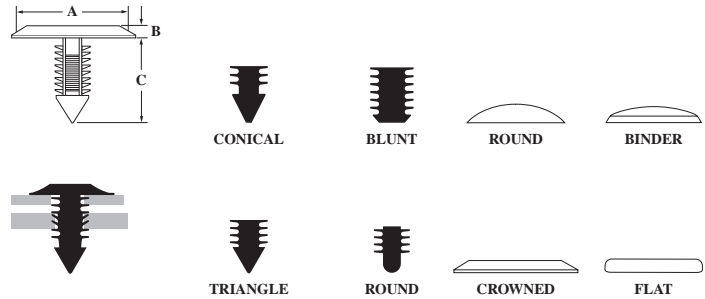
**Part Number: G17+ Code**



CODE	ASSEMBLED PANEL THICKNESS	HEAD DIAMETER & THICKNESS
001	.235-.298	.750/.094
002	.345-.500	.750/.094
003	.500-.812	.750/.093
004	.780-1.375	.750/.093
005	.235-.297	.406/.062
006	.346-.500	.406/.063
007	.500-.813	.406/.063
008	.780-1.375	.406/.062

Two mating parts to securely connect flat panels. (Assembly to fit .281 diameter hole.)

# X-MAS TREE CLIPS



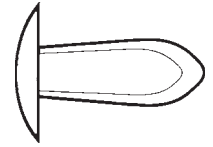
**Part Number: B15+ Code**

CODE	POINT STYLE	HOLE DIAMETER	PANEL THICKNESS*	HEAD DIAMETER A	HEAD STYLES	HEAD HEIGHT B	PRONG LENGTH C
001	MOD. BLUNT	.120-.130	.135-.250	.235-.245	FLAT	.070-.090	.298-.318
003	BLUNT	.151-.161	.035-.312	.360-.390	MOD. FLAT	.080-.100	.511-.551
004	CONICAL	.182-.192	.035-.210	.427-.447	FLAT	.065-.075	.432-.452
005	CONICAL	.182-.192	.080-4.02	.427-.447	FLAT	.065-.075	.630-.650
006	CONICAL	.182-.192	.080-.400	.327-.347	ROUND	.040-.060	.560 REF.
007	ROUND	.182-.192	.200-1.150	.432-.442	FLAT	.070-.090	1.360-1.390
008	CONICAL	.185-.195	.100-.600	.460-.480	BINDER**	.038-.040	.700 REF.
009	TRIANGLE	.190-.200	.060-.480	.745-.755	FLAT**	.065-.075	.690-.710
011	CONICAL	.223-.233	.140-.750	.490-.510	BINDER	.054-.064	.935-.955
012	ROUND	.240-.260	.075-.185	.610-.625	FLAT	.115-.135	.384-.404
014	MOD. TRIANGLE	.245-.255	.095-.320	.730-.770	FLAT	.030-.050	.470-.510
015	CONICAL	.245-.255	.040-.750	.740-.760 SQ.	FLAT	.050-.060	1.050-1.080
016	CONICAL	.245-.255	.065-1.250	.990-1.010	FLAT	.050-.070	1.415-1.465
017	MOD. TRIANGLE	.245-.255	.070-.400	690-.710	ROUND	.090-.110	.561-REF.
018	MOD. TRIANGLE	.245-.255	.070-.400	.490-.510	ROUND	.050-.070	.571 REF.
019	TRIANGLE	.247-.257	.110-.370	1.240-1.260	FLAT	.049-.069	.429-.451
021	CONICAL	.276-.286	.350-.800	1.210-1.230	MOD. FLAT	.085-.095	1.100-1.140
022	CONICAL	.276-.286	.250-.800	.495-.505	ROUND	.055-.065	.940-.950
024	TRIANGLE	.276-.286	.050-.900	.750-.770	CROWNED	.100-.120	1.240-1.280
025	TRIANGLE	.276-.286	.093-.470	.610-.630	FLAT	.035-.045	.720-.770
026	CONICAL	.276-.286	.100-.870	.580-.620	CROWNED	.050-.070	1.300-1.320
027	CONICAL	.276-.286	.810-1.580	.580-.620	CROWNED	.050-.070	2.010-2.030
028	TRIANGLE	.276-.286	1.520-2.290	.580-.620	CROWNED	.050-.070	2.730 REF.
029	CONICAL	.281-.291	.530-.920	1.240-1.260	BINDER	.085-.095	1.155-1.225
031	BLUNT	.315-.325	.093-.400	.370-.390 X .490-.510	MODIFIED CROWN	.075-.105	.520-.540
032	BLUNT	.312-.325	.130-.500	.490-.510	BINDER	.045-.055	.660 REF.

\* Due to the unique prong design the recommended panel thickness range can be exceeded in certain applications. X-mas Tree Clips do not have to extend beyond the panel and will hold securely in blind holes if the panel material is softer than the X-mas Tree Clip (i.e., wood, particle board, rigid foam, etc.)

\*\* Grained surface  
 Note: not all parts have fin design shown.  
 Note: Dimensions listed are nominal

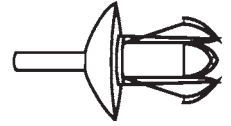
## NYLON ARROW/CANOE CLIPS



## Part Number: B11 + Code

CODE	ROUND HOLE SIZE	HEAD SIZE	GRIP RANGE	CLIP DIAMETER	LENGTH
001	.135-.140	.300 X .060	.060-.070	.165	.330
002	.131-.141	.406 X .150	.060-.090	.160	.275
003	.131-.141	.406 X .100	.080-.125	.170	.365
004	.131-.141	.406 X .100	.115-.160	.155	.437
005	.131-.141	.300 X .100	.115-.160	.155	.437
006	.182-.192	.375 X .060	.100-.160	.205	.437
007	.250	.500 X .055	.095-.218	.285	.630
008	.182-.192	.360 X .060	.062-.125	.225	.400
009	.131-.135	.270 X .060	.062-.125	.160	.395
010	.151-.161	.280 X .080	.062-.145	.180	.400
011	.213-.223	.370 X .060	.125-.187	.248	.540
012	.182-.192	.370 X .060	.310-.330	.225	.540
013	.213-.223	.370 X .060	.062-.125	.225	.450
014	.250-.260	.484 X .060	.125-.187	.290	.575
015	.182-.192	.375 X .060	.165-.185	.206	.525
016	.130-.132	.270 X .070	.125-.140	.162	.318
017	.145-.150	.270 X .070	.290-.300	.196	.530
018	.118-.122	.280 X .060	.062-.125	.150	.390
019	.250-.260	.615 X .065	.360-.380	.286	.810
020	.320-.335	.683 X .070	.062-.340	.375	.900
021	.250-.260	.610 X .068	.500-.750	.287	1.135
022	.151-.161	.280 X .040	.062-.125	.196	.390
023	.120-.135	.270 X .040	.062-.125	.140	.330
024	.335-.345	.866 X .050	.062-.140	.370	.458
025	.062-.065	.100 X .020	.010-.031	.068	.125
026	.195-.200	.370 X .060	.035-.065	.225	.350
027	.160-.165	.280 X .080	.032-.125	.186	.400
028	.330-.340	.685 X .070	.125-.350	.375	.895
029	.250-.260	.500 X .050	.125-.250	.280	.630
030	.085-.090	.125 X .030	.032-.107	.107	.187

## NYLON BLIND DRIVE RIVETS



### Part Number: B14 + Code

CODE	NOMINAL HOLE	GRIP RANGE	HEAD SIZE	HEAD STYLE	PRONG LENGTH
001	.125	.031-.140	.187 x .047	ROUND	.190
002	.136	.125-.187	.250 x .071	ROUND	.260
003	.187	.062-.125	.281 x .075	ROUND	.230
004	.187	.062-.187	.437 x .075	TRUSS	.295
005	.187	.156-.281	.437 x .075	TRUSS	.391
006	.250	.281-.500	.468 x .080	TRUSS	.620
007	.187	.156-.281	.430 x .075	TRUSS	.380
008	.218	.093-.350	.375 x .080	ROUND	.450
009	.156	.187-.250	.218 x .050	BINDER	.312
010	.218	.094-.312	.437 x .100	BINDER	.464
011	.156	.218-.312	.218 x .050	BINDER	.359
012	.187	.062-.187	.281 x .050	TRUSS	.296
013	.156	.218-.383	.218 x .050	BINDER	.421
014	.187	.062-.125	.430 x .120	BINDER	.218
015	.187	.125-.187	.430 x .075	TRUSS	.281
016	.187	.062-.187	.430 x .075	TRUSS	.285
017	.187	.031-.200	.275 x .075	ROUND	.295
018	.187	.312-.440	.281 x .075	BINDER	.535
019	.187	.062-.187	.281 x .075	ROUND	.295
020	.187	.078-.375	.281 x .047	ROUND	.450
021	.187	.312-.440	.320 x .109	ROUND	.535
022	.187	.375-.500	.281 x .080	BINDER	.625
023	.187	.078-.375	.320 x .109	ROUND	.455
024	.187	.375-.500	.320 x .109	ROUND	.609
025	.187	.375-.750	.320 x .109	ROUND	.850
026	.275	.062-.600	.370 x .080	ROUND	.640
027	.250	.350-.500	.468 x .080	BINDER	.620
028	.250	.350-.500	.370 x .080	ROUND	.620

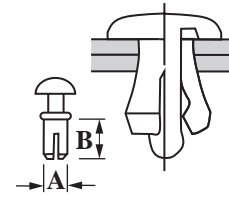
CODE	NOMINAL HOLE	GRIP RANGE	HEAD SIZE	HEAD STYLE	PRONG LENGTH
029	.250	.156-.330	.468 x .080	BINDER	.375
030	.250	.093-.312	.468 x .080	BINDER	.500
031	.187	.312-.440	.312 x .062	BINDER	.535
032	.187	.375-.500	.315 x .062	BINDER	.609
033	.245	.140-.550	.375 x .100	BINDER	.625
034	.187	.078-.375	.312 x .062	BINDER	.450
035	.250	.125-.437	.468 x .080	BINDER	.585
036	.250	.078-.275	.494 x .305	BUTTON	.375
037	.218	.031-.062	.375 x .223	BUTTON	.170
038	.182	.130-.290	.280 x .050	TRUSS	.380
039	.160	.062-.180	.295 x .050	ROUND	.230
041	.226	.125-.312	.437 x .075	TRUSS	.468
042	.250	.062-.125	.370 x .080	ROUND	.218
043	.250	.093-.312	.468 x .080	TRUSS	.500
044	.250	.109-.156	.500 x .312	ROUND	.375
045	.125	.031-.140	.218 x .060	ROUND	.225
046	.218	.187-.250	.375 x .080	TRUSS	.343
047	.275	.093-.350	.620 x .109	BINDER	.480
048	.280	.062-.350	.485 x .075	TRUSS	.468
049	.250	.093-.312	.625 x .109	BINDER	.500
050	.250	.281-.500	.625 x .109	BINDER	.620
051	.226	.125-.312	.375 x .080	ROUND	.468
052	.187	.062-.187	.375 x .080	ROUND	.295
053	.187	.156-.281	.375 x .080	ROUND	.380
054	.187	.062-.187	.375 x .080	ROUND	.281
055	.266	.093-.187	.620 x .109	BINDER	.300
056	.215	.078-.300	.630 x .080	TRUSS	.430
057	.160	.218-.312	.375 x .050	ROUND	.355

Prongs of the Blind Drive Rivets compress to enter hole, lock tight when blow drives integral pin through hollow shank.

## NYLON SNAP RIVET

### Part Number B18 + Code

CODE	A	B	PANEL THICKNESS
001	.180	.135	.060/.120
002	.118	.140	.050/.100
003	.122	.220	.122/.160
004	.155	.200	.100-.140
005	.155	.240	.144/.188
006	.200	.280	.160/.200
007	.102	.170	.078/.118
008	.135	.220	.118/.157
009	.157	.315	.148/.188
010	.157	.236	.050/.180
011	.166	.265	.170/.210
012	.118	.520	.400/.440
013	.198	.368	.230/.300
014	.160	.315	.100/.250
015	.135	.180	.060/.120

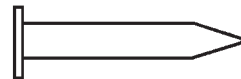


□ ±.010 on B Dimension

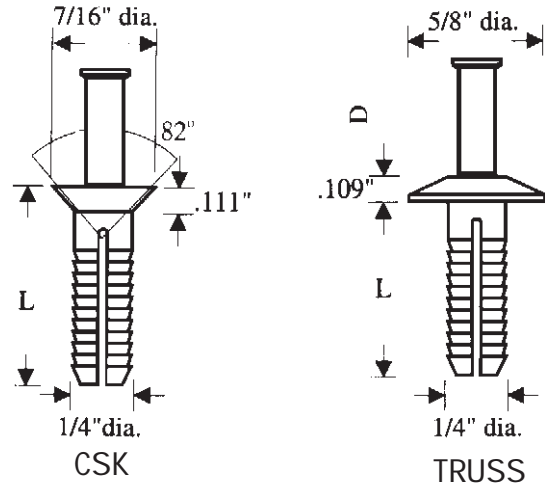
## MOLDED NYLON NAILS

### Part Number: K14 + Code Number

CODE	DIAMETER	LENGTH
001	3/16	3/4
002	3/16	1-1/2
003	7/32	1-1/4



## INSULATING BLIND DRIVE RIVETS




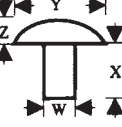
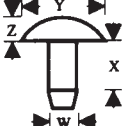
### Part Number: B16 + Code

CODE	LENGTH "L"	STYLE	THICK "D"	GRIP RANGE MIN.	GRIP RANGE MAX.	PLASTIC RIVET COLOR	PIN
001	3/4	TRUSS	.109	1/16	1/2	NATURAL	ALUMINUM
002	3/4	TRUSS	.109	1/16	1/2	BLACK	ALUMINUM
003	3/4	TRUSS	.109	1/16	1/2	NATURAL	PLASTIC
004	3/4	TRUSS	.109	1/16	1/2	BLACK	PLASTIC
005	3/4	TRUSS	.109	1/16	1/2	WHITE	PLASTIC
006	3/4	CSK	.111	3/16	1/2	NATURAL	ALUMINUM
007	3/4	CSK	.111	3/16	1/2	NATURAL	PLASTIC
008	3/4	CSK	.111	3/16	1/2	WHITE	PLASTIC
009	1	TRUSS	.109	1/4	3/4	NATURAL	ALUMINUM
010	1	TRUSS	.109	1/4	3/4	NATURAL	PLASTIC
011	1	TRUSS	.109	1/4	3/4	WHITE	PLASTIC
012	1	CSK	.111	1/4	3/4	NATURAL	ALUMINUM
013	1	CSK	.111	1/4	3/4	NATURAL	PLASTIC
014	1	CSK	.111	1/4	3/4	WHITE	PLASTIC
015	2	TRUSS	.131	1-5/16	1-7/8	WHITE	PLASTIC
016	3	TRUSS	.131	2-5/16	2-7/8	WHITE	PLASTIC
017	4	TRUSS	.131	3-5/16	3-7/8	WHITE	PLASTIC

- Drive pin/nylon body assembly, all plastic
- One blow sets rivet, no need for special tools
- Large grip capacity allows multi-thickness, single rivet size fastening
- Corrosion, vibration resistant
- Ideal for insulating, such as refrigeration liners

# NYLON STEMMED BUMPERS & RIVETS

Part Number: G11 + Code

CODE	DIMENSIONS				EXAMPLE
	STEM (W) DIAMETER	STEM (X) LENGTH	HEAD (Y) DIAMETER	HEAD (Z) THICKNESS	
003	.062	.109	.094	.046	
009	.085	.125	.143	.058	
017	.110	.050	.200	.093	
105	.140	.140	.250	.080	
010*	.085	.187	.143	.058	
012*	.085	.250	.143	.058	
013	.085	.312	.143	.058	
014*	.085	.375	.143	.058	
015*	.085	.437	.143	.058	
016*	.085	.500	.143	.058	
019	.125	.125	.218	.090	
021*	.125	.125	.250	.068	
023*	.125	.187	.218	.090	
024*	.125	.187	.250	.068	
025*	.125	.250	.218	.090	
026	.125	.250	.255	.051	
027*	.125	.250	.250	.068	
028	.125	.375	.255	.051	
029*	.125	.312	.218	.090	
030*	.125	.312	.250	.068	
032*	.125	.375	.218	.090	
033*	.125	.375	.250	.068	
035*	.125	.437	.250	.068	
036*	.125	.500	.218	.090	
037*	.125	.500	.250	.068	
038*	.125	.562	.250	.068	
039*	.125	.625	.250	.068	
040*	.125	.687	.250	.068	
046	.260	.218	.421	.187	
131	.085	.125	.147	.058	
132	.085	.312	.147	.025/.058	
047	.328	.157	.562	.093	
049	.150	.312	.380	.078	
052	.156	.250	.375	.093	
056	.160	.187	.312	.125	

- Items with asterisks (\*) are made of acetal/delrin
- Minimums may be required

## NYLON STEMMED BUMPERS & RIVETS (CONTINUED)

Part Number: G11 + Code

CODE	DIMENSIONS				EXAMPLE	
	STEM (W) DIAMETER	STEM (X) LENGTH	HEAD (Y) DIAMETER	HEAD (Z) THICKNESS		
018	.125	.039	.250	.063		
022	.125	.172	.246	.046		
058	.078	.094	.203	.015		
061	.092	.033	.156	.032		
065	.125	.187	.406	.078		
072	.186	.500	.625	.190		
094	.188	.406	.437	.093		
084	.091	.060	.155	.065		
085	.091	.060	.155	.096		
086	.116	.405	.200	.060		
087	.125	.152	.187	.030		
088	.134	.285	.250	.090		
090	.156	.250	.500	.097		
091	.158	.172	.344	.078		
096	.203	.281	.250	.094		
097	.256	.375	.500	.125		
098	.068	.046	.125	.078		
101	.076	.062	.156	.093		
103	.093	.060	.155	.060		
106	.158	.185	.308	.058		
107	.187	.125	.500	.125		
109	.158	.195	.310	.093		
111	.152	.250	.500	.062		
113	.260	.437	.750	.187		
112	.184	.157	.343	.046		
115	.153	.188	.372	.093		
117	.215	.280	.375	.063		
114	.109	.109	.250	.093		