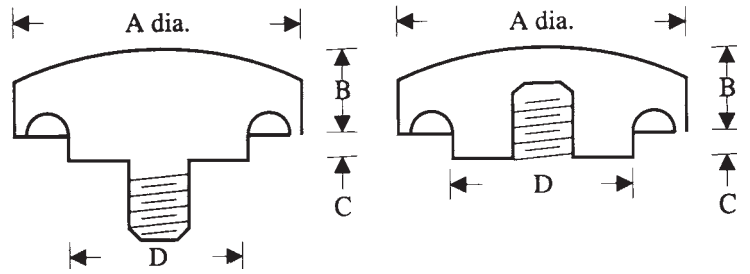


**KNURLED PHENOLIC SCREWS & NUTS
BLACK COLOR**



Part Number: E17 + Code

CODE	HAND NUTS TAPPED THREAD SIZE	HAND SCREWS THREADED STUD SIZE AND LENGTH	HEAD DIA. "A"	DIMENSIONS		
				"B"	"C"	"D"
001	6-32	x	3/4	7/32	1/4	5/8
002	8-32	x	3/4	7/32	1/4	5/8
003	10-32	x	3/4	7/32	1/4	5/8
004	8-32	x	3/4	1/4	9/32	5/8
005	10-32	x	3/4	1/4	9/32	5/8
006	1/4-20	x	3/4	1/4	9/32	5/8
007	x	8-32 x 1/2	3/4	1/4	9/32	5/8
008	x	8-32 x 3/4	3/4	1/4	9/32	5/8
009	x	8-32 x 1	3/4	1/4	9/32	5/8
010	x	10-32 x 3/4	3/4	1/4	9/32	5/8
011	x	10-32 x 1	3/4	1/4	9/32	5/8
012	x	1/4-20 x 3/4	3/4	1/4	9/32	5/8
013	x	1/4-20 x 1	3/4	1/4	9/32	5/8
014	10-32	x	1	11/32	5/16	5/8
015	1/4-20	x	1	11/32	5/16	5/8
016	x	10-32 x 1/2	1	11/32	5/16	5/8
017	x	10-32 x 3/4	1	11/32	5/16	5/8
018	x	10-32 x 1	1	11/32	5/16	5/8
019	x	1/4-20 x 1/2	1	11/32	5/16	5/8
020	x	1/4-20 x 3/4	1	11/32	5/16	5/8
021	x	1/4-20 x 1	1	11/32	5/16	5/8
022	x	1/4-20 x 1-1/2	1	11/32	5/16	5/8

- Code #s 001, 002, 003 – material: ABS
- Allows frequent adjustment of higher torque applications
- Useful as control knobs, handles
- Useful on portable tools, household appliances, transformer & battery terminal nuts
- Wide diameter heads, sharp knurled circumferential band for non-slip grasp
- Strong internally threaded metal nut bushings
- Molding process prevents high torque head slippage
- Phenolic plastic make-up provides excellent electrical insulation, high heat & chemical resistance
- Zinc, cadmium plated male threaded screws, brass female threaded nuts
- Minimum quantities may apply

KNURLED PHENOLIC SCREWS & NUTS (CONTINUED)

BLACK COLOR

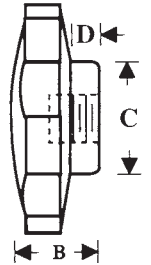
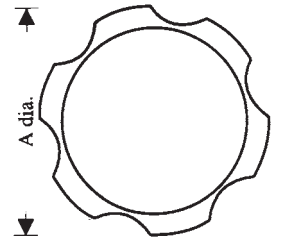
Part Number: E17 + Code

CODE	HAND NUTS TAPPED THREAD SIZE	HAND SCREWS THREADED STUD SIZE AND LENGTH	HEAD DIA. "A"	DIMENSIONS		
				"B"	"C"	"D"
023	10-32	x	1-3/8	13/32	3/8	3/4
024	1/4-20	x	1-3/8	13/32	3/8	3/4
025	5/16-18	x	1-3/8	13/32	3/8	3/4
026	3/8-16	x	1-3/8	13/32	3/8	3/4
027	x	1/4-20 x 1/2	1-3/8	13/32	3/8	3/4
028	x	1/4-20 x 3/4	1-3/8	13/32	3/8	3/4
029	x	1/4-20 x 1	1-3/8	13/32	3/8	3/4
030	x	1/4-20 x 1-1/2	1-3/8	13/32	3/8	3/4
031	x	5/16-18 x 3/4	1-3/8	13/32	3/8	3/4
032	x	5/16-18 x 1	1-3/8	13/32	3/8	3/4
033	x	5/16-18 x 1-1/2	1-3/8	13/32	3/8	3/4
034	x	5/16-18 x 2	1-3/8	13/32	3/8	3/4
035	x	3/8-16 x 1	1-3/8	13/32	3/8	3/4
036	x	3/8-16 x 1-1/2	1-3/8	13/32	3/8	3/4
037	x	3/8-16 x 2	1-3/8	13/32	3/8	3/4
038	1/4-20	x	1-7/8	1/2	1/2	1
039	5/16-18	x	1-7/8	1/2	1/2	1
040	3/8-16	x	1-7/8	1/2	1/2	1
041	x	1/4-20 x 1/2	1-7/8	1/2	1/2	1
042	x	1/4-20 x 3/4	1-7/8	1/2	1/2	1
043	x	1/4-20 x 1	1-7/8	1/2	1/2	1
044	x	1/4-20 x 1-1/2	1-7/8	1/2	1/2	1
045	x	5/16-18 x 3/4	1-7/8	1/2	1/2	1
046	x	5/16-18 x 1	1-7/8	1/2	1/2	1
047	x	5/16-18 x 1-1/2	1-7/8	1/2	1/2	1
048	x	5/16-18 x 2	1-7/8	1/2	1/2	1
049	x	3/8-16 x 1	1-7/8	1/2	1/2	1
050	x	3/8-16 x 1-1/2	1-7/8	1/2	1/2	1
051	x	3/8-16 x 2	1-7/8	1/2	1/2	1

FLUTED PHENOLIC SCREWS & NUTS

Part Number: E18 + Code

CODE	KNOB NUTS THREAD SIZE	KNOB SCREWS THREAD SIZE LENGTH	HEAD DIA. "A"	DIMENSIONS		
				"B"	"C"	"D"
001	1/4-20	-	1-3/8	27/32	27/32	25/64
002	5/16-18	-	1-3/8	27/32	27/32	25/64
003	-	1/4-20 X 1/2	1-3/8	27/32	27/32	25/64
004	-	1/4-20 X 1	1-3/8	27/32	27/32	25/64
005	-	5/16-18 X 1/2	1-3/8	27/32	27/32	25/64
006	-	5/16-18 X 1	1-3/8	27/32	27/32	25/64
007	5/16-18	-	1-3/4	1-1/16	1-1/16	1/2
008	3/8-16	-	1-3/4	1-1/16	1-1/16	1/2
009	-	5/16-18 X 3/4	1-3/4	1-1/16	1-1/16	1/2
010	-	5/16-18 X 1-1/2	1-3/4	1-1/16	1-1/16	1/2
011	-	3/8-16 X 3/4	1-3/4	1-1/16	1-1/16	1/2
012	-	3/8-16 X 1-1/2	1-3/4	1-1/16	1-1/16	1/2
013	3/8-16	-	2-3/8	1-5/16	1-1/4	5/8
014	1/2-13	-	2-3/8	1-5/16	1-1/4	5/8
015	-	3/8-16 X 1	2-3/8	1-5/16	1-1/4	5/8
016	-	3/8-16 X 2	2-3/8	1-5/16	1-1/4	5/8
017	-	1/2-13 X 1	2-3/8	1-5/16	1-1/4	5/8
018	-	1/2-13 X 2	2-3/8	1-5/16	1-1/4	5/8



4-PRONGED PHENOLIC SCREWS & NUTS

Part Number: E19 + Code

CODE	KNOB NUTS THREAD SIZE	KNOB SCREWS THREAD SIZE LENGTH	HEAD DIA. "A"	DIMENSIONS		
				"B"	"C"	"D"
001	1/4-20	-	1-1/4	7/8	5/8	3/8
002	5/16-18	-	1-1/4	7/8	5/8	3/8
003	-	1/4-20 X 1	1-1/4	7/8	5/8	3/8
004	-	5/16-18 X 1	1-1/4	7/8	5/8	3/8
005	1/4-20	-	1-3/4	1	13/16	1/2
006	5/16-18	-	1-3/4	1	13/16	1/2
007	3/8-16	-	1-3/4	1	13/16	1/2
008	5/16-18	-	2-1/4	1-1/8	1	9/16
009	3/8-16	-	2-1/4	1-1/8	1	9/16
010	1/2-13	-	2-1/4	1-1/8	1	9/16
011	-	3/8-16 X 1-1/2	2-1/4	1-1/8	1	9/16
012	-	3/8-16 X 2	2-1/4	1-1/8	1	9/16

